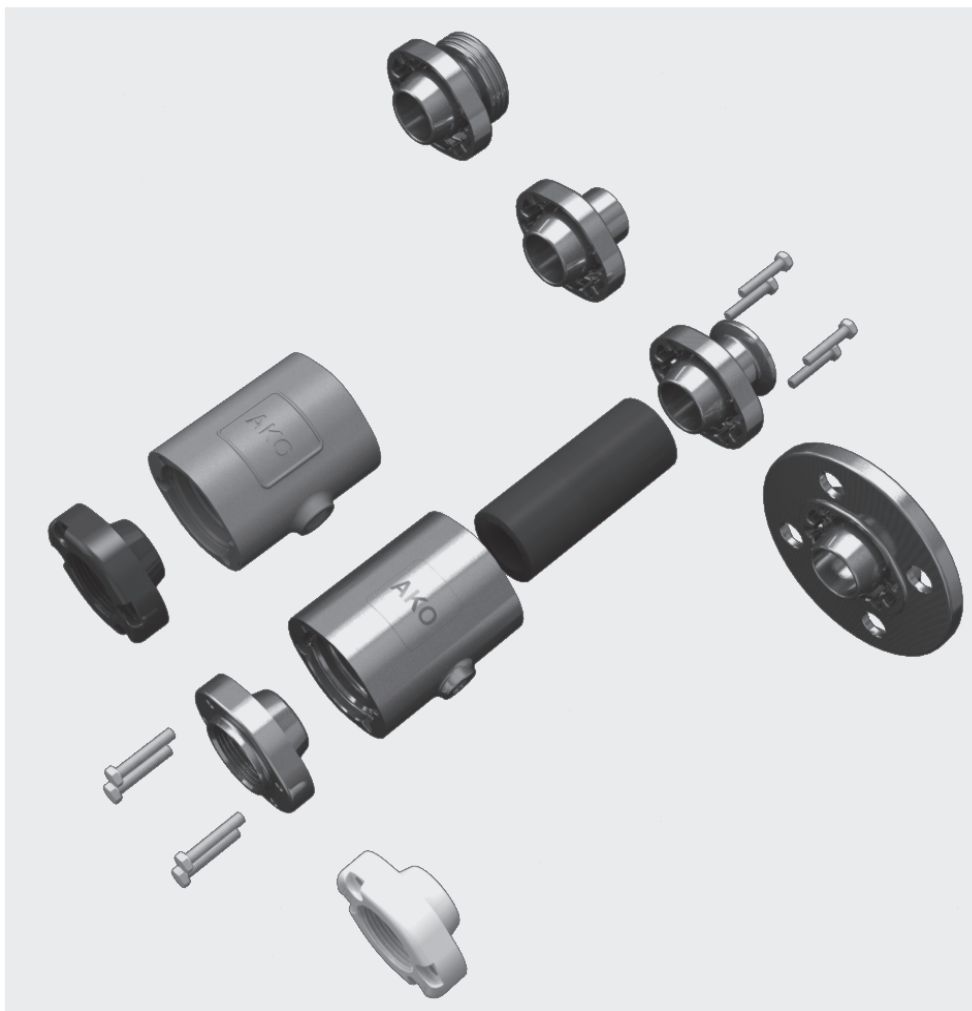


Pneumatisk slangeventil type VMC

Air operated Pinch Valve type VMC



Flens / Flange



Innvendige gjenger / Internal Thread



Hurtigkoping / Tri-Clamp



Sveisemuffe / Weld-on ends



Utvendige gjenger / Threaded spigot

▲ Modulbasert ventil med avtakbare og aseptiske rørkoplinger!

Den smarte løsningen for å kontrollere strømning av alle typer tørre og våte medier. Lett eller tungt flytende, granulater og slitende partikler.

Ventilens fordeler:

- Fleksibelt og modulært system
- Mange tilkoblingsmuligheter
- Enkelt vedlikehold og slangeskift
- Uhindret ventilløp, helt fri passasje
- Helt tett når ventilen er lukket
- Ingen dødsoner
- Kompakte mål
- Lav vekt
- Prisgunstig

▲ The flexible modular system for solvable and aseptic piping connections!

The ideal solution for isolation and regulation of solids of all kinds, suspensions, pastes, gaseous, fibrous and viscous media.

Advantages:

- Flexible modular system
- Various connection options
- Extremely compact
- Light weight
- Complete free passage
- No dead spots
- Easy maintenance and re-sleeving
- 100% tight shut off
- Competitive

Pneumatisk slangeventil type VMC

Air operated Pinch Valve type VMC

Industri områder:

- Næringsmiddel/ Drikkevarer/ Farmasøytisk industri
- Kjemisk industri
- Pneumatiske transportsystemer
- Pigmenter og granulater
- Keramisk/ glass/ plastindustri
- Avsugsanlegg
- Doseringsystemer
- Fylle og veie systemer
- Ventilasjon

Flere typer aseptiske koplinger kan leveres!

Koplinger:

Flens
Innvendige gjenger G eller NPT
Tri-Clamp
Sveisemuffe
Utvendige gjenger, melkerør (RTJ kopling)

Konduktive (elektrisk ledende) koplinger med separat jording som kan anvendes i eksplosjons-farlige områder. Sone 1, 2, 21 og 22.

De pneumatiske ventilene i VMC serien oppfyller alle kravene i trykkdirektivet 97/23/EC.

Materialer:

Ventilkropp: Rustfritt stål 1.4408
Aluminium AISi10Mg
Plast POM
Endestykke: Rustfritt stål 1.4404
Plast POM

Ventilslanger:

Naturgummi slitesterk, Naturgummi næringsmiddel, EPDM, EPDM næringsmiddel, Nitril, Nitril næringsmiddel, Hypalon, Neopren, Silikon, Viton, andre på forespørsel

Største prosesstrykk: ~ 6 bar
Instrument trykk: 8 bar
Differansetrykk: 2-3,5 bar
trykk varierer etter diameter /slange

Industrial areas:

- Food/ pharmaceutical/ beverage industry
- Chemical industry
- Pneumatic conveying systems
- Pigments and granules
- Ceramics/ glass/ plastic industry
- Extraction systems
- Dosing systems
- Filling and weighing systems
- Air venting systems

Connections with various aseptic connections available!

Connection options:

Flange Connection
Internal Thread Connection G / NPT
Tri-Clamp
Weld-on ends
Threaded spigot (RJT Connection)

Special, conductive models with a separate earthing system, which are suitable for use in areas at risk of explosions (EX) in zones 1, 2, 21 and 22 are also available.

The air operated Pinch Valves of VMC series fulfill all requirements of the Pressure Equipment Directive 97/23/EC.

Materials:

Body: Stainless steel 1.4408
Aluminium AISi10Mg
Plastic POM
Socket Connection: Stainless steel 1.4404
Plastic POM

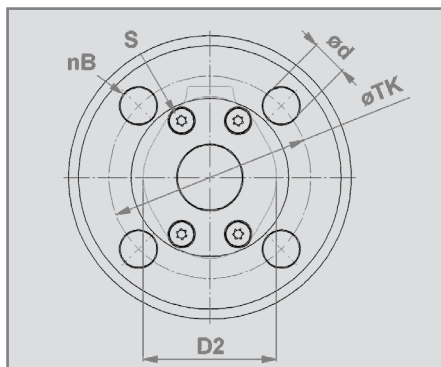
Sleeves:

Natural rubber antiabrasive, Natural rubber food quality, EPDM, EPDM food quality, Nitrile, Nitrile food quality, Hypalon, Neoprene, Silicone, Viton, other materials on request.

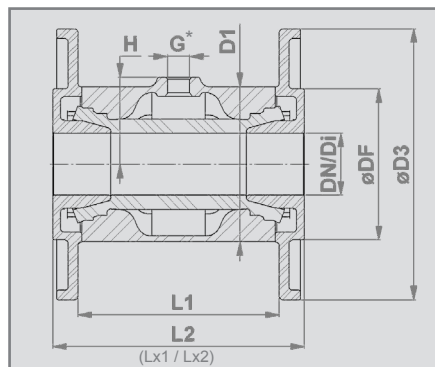
Operating / medium pressure max.: ~ 6 bar
Control / closing pressure max.: 8 bar
Differential pressure: 2-3.5 bar
varies depending on diameter / sleeve

Pneumatisk slangeventil med flens

Air operated Pinch Valve - Flange connection



DN25 - DN50



* DIN EN ISO 228 "G"

Flens type:

Flens i henhold til

DIN EN 1092-1 PN 10/16

DIN 11853-2 (Lx1) / på forespørsel 11864-form A (Lx2)

Ventilkropp:

- Rustfritt stål 1.4408 (E)
- Aluminium AlSi10Mg (A)

Flens:

- Rustfritt stål 1.4404 (E)

Ventil overflate:

Rustfritt stål: Elektropolert matt

Våte deler = Ra 0,5

Satin polert (børstet) Ra 0,3

Aluminium: Pulver lakkert 60-80µm RAL 9006

Connection type:

Flange connection according to

DIN EN 1092-1 PN 10/16

DIN 11853-2 (Lx1) / 11864-2 form A (Lx2) on request

Body:

- Stainless steel 1.4408 (E)
- Aluminium AlSi10Mg (A)

Flange:

- Stainless steel 1.4404 (E)

Valve finish:

Stainless steel: Elektropolert matt

Wetted parts = Ra 0.5

Satin polished (brushed) Ra 0.3 on request.

Aluminium: Powder coated 60-80µm RAL 9006

DN / Di (mm)	D1 (mm)	D2 (mm)	ø D3 (mm)	ø DF (mm)	nB	ø d (mm)	ø TK (mm)	L1 (mm)	L2 (mm)	Lx1 (mm)	Lx2 (mm)	G (inch)	H (mm)	S	² Vol. (l) ² vol. (l) (ca./approx.)	Vekt weight (kg) (EE)	Vekt weight (kg) (AE)
25	72	57	115	68	4	14	85	96	125	213	218	1/8"	36,5	4x(M6x35)	0,09	2,4	1,9
32	80	66	140	78	4	18	100	104	130	226	241	1/4"	45	8x(M6x35)	0,13	2,9	2,3
40	90	77	150	88	4	18	110	119	155	238	253	1/4"	50	8x(M6x35)	0,22	4,0	3,1
50	110	88	165	106	4	18	125	149	185	264	279	1/4"	60	8x(M6x35)	0,36	5,8	4,4

¹ Antall hull / Number of holes

¹ Festeskruer (Rustfritt 1.4401/AISI316) iht DIN 7985 / mounting screws (stainless steel 1.4401 / AISI 316) according to DIN 7985

² Volum = Instrumentluftvolum ved lukket ventilslange / Volume = Control volume with closed sleeve

Forbehold mot tekniske endringer.

Technical details subject to change without notice.

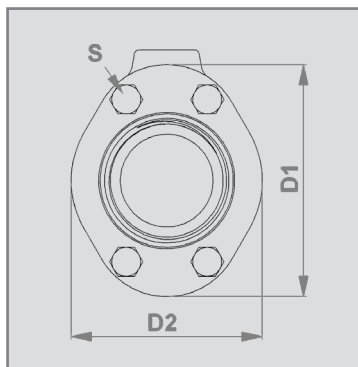
Brevik Process AS

Strømtangvn. 21 • N-3950 Brevik • Phone: +47 35 51 87 00 • Fax: +47 35 51 88 00

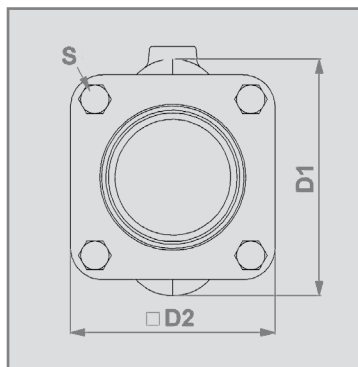
E-Mail: bp@brevik-process.no • Web: <http://www.brevik-process.no>

Pneumatisk slangeventil med innvendige gjenger

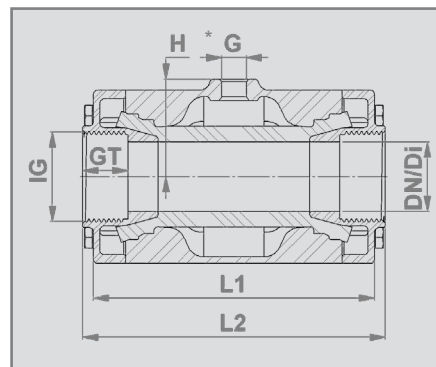
Air operated Pinch Valve - Internal Thread connection



DN10 - DN50



DN65 - DN100



* DIN EN ISO 228 "G"

Kopling/type:

Innvendige gjenger iht
DIN EN ISO 228 "G" eller
ANSI/ASME B1.20.1 "NPT"

Connection type:

Internal Thread Connection according to
DIN EN ISO 228 "G" or
ANSI/ASME B1.20.1 "NPT"

Ventilkropp:

- DN 10-50: Rustfritt stål 1.4408 (E)
- DN 20-50: Aluminium AISi10Mg (A)
- DN 10-15: Plast POM (P) natur hvit
- DN 10-15: Plast POM (P) konduktiv

Body:

- DN 10-50: Stainless steel 1.4408 (E)
- DN 20-50: Aluminium AISi10Mg (A)
- DN 10-15: Plastic POM (P) natural white
- DN 10-15: Plastic POM (P) conductive

Gjenget sokkel innvendige gjenger:

- DN 10-50: Rustfritt stål 1.4404 (E)
- DN 20-50: Plast POM (P) natur hvit
- DN 20-50: Plast POM (P) konduktiv, for eksplosjonsfarlige områder,

(Internal Thread) Socket ends:

- DN 10-50: Stainless steel 1.4404 (E)
- DN 20-50: Plastic POM (P) natural white
- DN 20-50: Plastic POM (P) conductive for hazardous areas

Ventil overflate:

Rustfritt stål: Elektropolert matt

Valve finish:

Stainless steel: Electropolished matt

Aluminium: Pulver lakkert 60-80µm RAL 9006

Aluminium: Powder coated 60-80µm RAL 9006

DN / Di (mm)	D1 (mm)	D2 (mm)	IG (inch)	GT (mm)	L1 (mm)	L2 (mm)	G (inch)	H (mm)	S	² Vol. (l) / ² vol. (l) (ca./approx)	Vekt weight (kg) (EE)	Vekt weight (kg) (AE)	Vekt weight (kg) (AP)	Vekt weight (kg) (PE)
10	46	35	G $\frac{3}{8}$ "	12	68	80	1/8"	23	4x(M6x16)	0,03	0,5	-	-	0,3
15	56	47	G $\frac{1}{2}$ "	15	85	95	1/8"	28	4x(M6x20)	0,05	0,8	-	-	0,4
20	62	49	G $\frac{3}{4}$ "	17	93	103	1/8"	31,5	4x(M6x25)	0,07	0,9	0,6	0,4	-
25	72	57	G1"	20	110	120	1/8"	36,5	4x(M6x30)	0,09	1,4	0,8	0,5	-
32	80	66	G1 $\frac{1}{4}$ "	21	130	140	1/4"	45	8x(M6x35)	0,13	1,8	1,2	0,9	-
40	90	77	G1 $\frac{1}{2}$ "	21	150	160	1/4"	50	8x(M6x35)	0,22	2,4	1,5	1,1	-
50	110	88	G2"	25	175	185	1/4"	60	8x(M6x35)	0,36	3,6	2,2	1,6	-

¹ Festeskruer (Rustfritt 1.4401/AISI316) iht DIN 933 (EN24107) / mounting screws (stainless steel 1.4401 / AISI 316) according to DIN 933 (EN24107)

² Volum = Instrumentluftvolum ved lukket ventilslange / Volume = Control volume with closed sleeve

Alternativt kan vår K-variant benyttes → lengde = 150mm / Alternatively available is our K-variant → length = 150mm

Forbehold mot tekniske endringer.

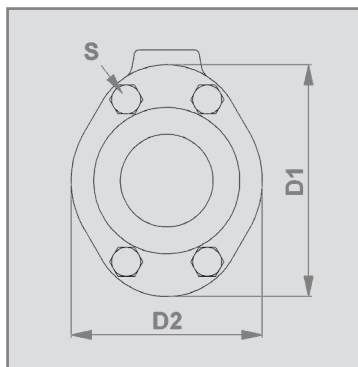
Technical details subject to change without notice.

Brevik Process AS

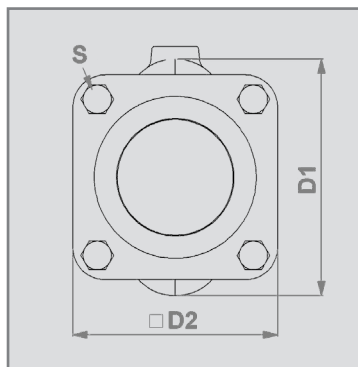
Strømtangvn. 21 • N-3950 Brevik • Phone: +47 35 51 87 00 • Fax: +47 35 51 88 00
E-Mail: bp@brevik-process.no • Web: http://www.brevik-process.no

Pneumatisk slangeventil med hurtigkopling

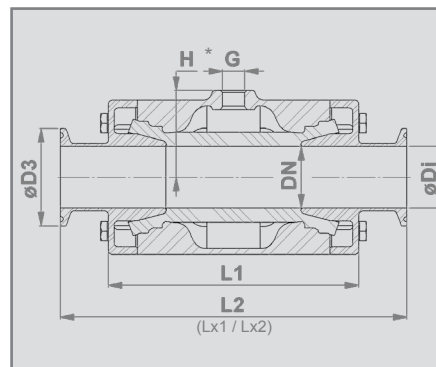
Air operated Pinch Valve - Tri-Clamp connection



DN10 - DN50



DN65 - DN100



* DIN EN ISO 228 "G"

Kopling/type:

Hurtigkopling iht DIN 32676

DIN 11853-3 (Lx1) / på forespørsel 11864-3 Form A (Lx2)

Connection type:

Tri-Clamp according to DIN 32676

DIN 11853-3 (Lx1) / 11864-3 form A (Lx2) on request

Ventilkropp:

- DN 10-50: Rustfritt stål 1.4408 (E)
- DN 20-50: Aluminium AISi10Mg (A)
- DN 10-15: Plast POM (P) natur hvit
- DN 10-15: Plast POM (P) konduktiv

Body:

- DN 10-50: Stainless steel 1.4408 (E)
- DN 20-50: Aluminium AISi10Mg (A)
- DN 10-15: Plastic POM (P) natural white
- DN 10-15: Plastic POM (P) conductive

Hurtigkopling/Endestykke:

- DN 10-50: Rustfritt stål 1.4404 (E)

Tri-Clamp Connection:

- DN 10-50: Stainless steel 1.4404 (E)

Ventilbyggjelengde:

DN 10: Iht DIN EN 558 rad 27

DN 15-50: Iht DIN EN 558 rad 1

Valve face to face length:

DN 10: Acc. to DIN EN 558 row 27

DN 15-50: Acc. to DIN EN 558 row 1

Ventil overflate:

Rustfritt stål: Elektropolert matt

Våte deler = Ra 0,5

Satin polert (børstet) Ra 0,3

Valve finish:

Stainless steel: Electropolished matt

Wetted parts = Ra 0.5

Satin polished (brushed) Ra 0.3 on request.

Aluminium: Pulver lakkert 60-80µm RAL 9006

Aluminium: Powder coated 60-80µm RAL 9006

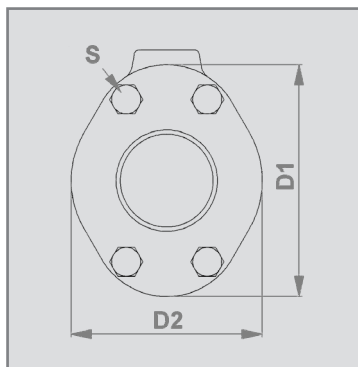
DN (mm)	ø Di (mm)	D1 (mm)	D2 (mm)	ø D3 (mm)	L1 (mm)	L2 (mm)	Lx1 (mm)	Lx2 (mm)	G (inch)	H (mm)	¹ S	² Vol. (l) vol. (l) (ca./approx.)	Vekt weight (kg) (EE)	Vekt weight (kg) (AE)	Vekt weight (kg) (PE)
10	10	46	35	34	80	115	162	190	1/8"	23	4x(M6x16)	0,03	0,5	-	0,3
15	16	56	47	34	95	130	187	215	1/8"	28	4x(M6x20)	0,05	0,9	-	0,5
20	20	62	49	34	103	150	199	227	1/8"	31	4x(M6x25)	0,07	1,0	0,6	-
25	26	72	57	50,50	120	160	212	241	1/8"	36	4x(M6x30)	0,09	1,5	1,0	-
32	32	80	66	50,50	140	180	229	267	1/4"	45	8x(M6x35)	0,13	1,9	1,3	-
40	38	90	77	50,50	160	200	241	279	1/4"	50	8x(M6x35)	0,22	2,6	1,7	-
50	50	110	88	64	185	230	268	304	1/4"	60	8x(M6x35)	0,36	3,9	2,5	-

¹ Festeskruer (Rustfritt 1.4401/AISI316) iht DIN 933 (EN24107) / mounting screws (stainless steel 1.4401 / AISI 316) according to DIN 933 (EN24107)

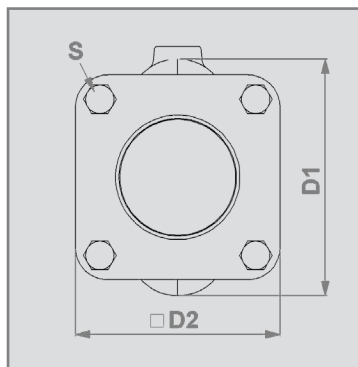
² Volum = Instrumentluftvolum ved lukket ventilslange / Volume = Control volume with closed sleeve

Pneumatisk slangeventil med sveisemuffe

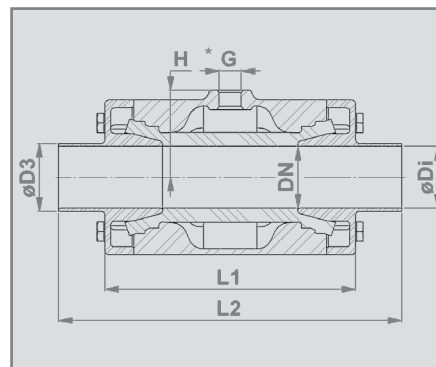
Air operated Pinch Valve - Weld-on ends



DN10 - DN50



DN65 - DN100



* DIN EN ISO 228 "G"

Kopling/type:

Sveisemuffe iht DIN 11850 rad 2

Connection type:

Weld-on ends according to DIN 11850 row 2

Ventilkropp:

- DN 10-50: Rustfritt stål 1.4408 (E)
- DN 20-50: Aluminium AISi10Mg (A)
- DN 10-15: Plast POM (P) natur hvit
- DN 10-15: Plast POM (P) konduktiv

Body:

- DN 10-50: Stainless steel 1.4408 (E)
- DN 20-50: Aluminium AISi10Mg (A)
- DN 10-15: Plastic POM (P) natural white
- DN 10-15: Plastic POM (P) conductive

Sveisemuffe:

- DN 10-50: Rustfritt stål 1.4404 (E)

Weld-on ends:

- DN 10-50: Stainless steel 1.4404 (E)

Ventilbyggelengde:

DN 10: Iht DIN EN 558 rad 27
DN 15-50: Iht DIN EN 12982 rad 61

Valve face to face length:

DN 10: Acc. to DIN EN 558 row 27
DN 15-50: Acc. to DIN EN 12982 row 61

Ventil overflate:

Rustfritt stål: Elektropolert matt
Våte deler = Ra 0,5
Satin polert (børstet) Ra 0,3

Valve finish:

Stainless steel: Electropolished matt
Wetted parts = Ra 0.5
Satin polished (brushed) Ra 0.3 on request.

Aluminium: Pulver lakkert 60-80µm RAL 9006

Aluminium: Powder coated 60-80µm RAL 9006

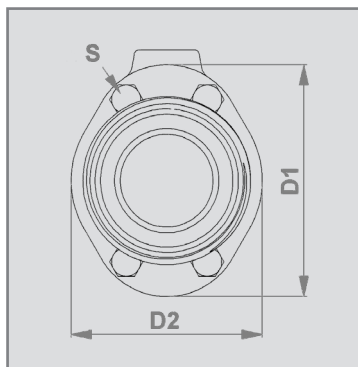
DN (mm)	ø Di (mm)	D1 (mm)	D2 (mm)	ø D3 (mm)	L1 (mm)	L2 (mm)	G (inch)	H (mm)	'S	² Vol. (l) / ² vol. (l) (ca./approx.)	Vekt weight (kg) (EE)	Vekt weight (kg) (AE)	Vekt weight (kg) (PE)
10	10	46	35	13x1,5	68	115	1/8"	23	4x(M6x16)	0,03	0,5	-	0,3
15	16	56	47	19x1,5	85	140	1/8"	28	4x(M6x20)	0,05	0,8	-	0,5
20	20	62	49	23x1,5	93	152	1/8"	31	4x(M6x25)	0,07	1,0	0,6	-
25	26	72	57	29x1,5	110	165	1/8"	36	4x(M6x30)	0,09	1,4	0,9	-
32	32	80	66	35x1,5	130	178	1/4"	45	8x(M6x35)	0,13	1,9	1,3	-
40	38	90	77	41x1,5	150	190	1/4"	50	8x(M6x35)	0,22	2,5	1,6	-
50	50	110	88	53x1,5	175	216	1/4"	60	8x(M6x35)	0,36	3,8	2,5	-

¹ Festeskruer (Rustfritt 1.4401/AISI316) iht DIN 933 (EN24107) / mounting screws (stainless steel 1.4401 / AISI 316) according to DIN 933 (EN24107)

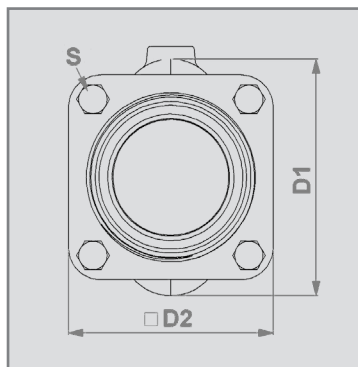
² Volum = Instrumentluftvolum ved lukket ventilslange / Volume = Control volume with closed sleeve

Pneumatisk slangeventil med utvendige gjenger

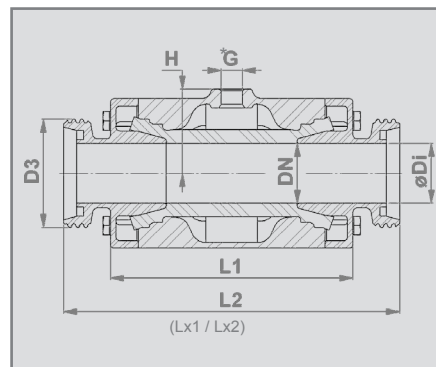
Air operated Pinch Valve - Threaded spigot



DN10 - DN50



DN65 - DN100



* DIN EN ISO 228 "G"

Kopling/type:

Utvendige gjenger iht DIN 11851

DIN 11853-1 (Lx1) / på forespørsel 11864-1 form A (Lx2)

Connection type:

Threaded spigot according to DIN 11851

DIN 11853-1 (Lx1) / 11864-1 form A (Lx2) on request

Ventilkropp:

- DN 10-50: Rustfritt stål 1.4408 (E)
- DN 20-50: Aluminium AISi10Mg (A)
- DN 10-15: Plast POM (P) natur hvit
- DN 10-15: Plast POM (P) konduktiv

Body:

- DN 10-50: Stainless steel 1.4408 (E)
- DN 20-50: Aluminium AISi10Mg (A)
- DN 10-15: Plastic POM (P) natural white
- DN 10-15: Plastic POM (P) conductive

Gjenget kopling/Endestykke:

- DN 10-50: Rustfritt stål 1.4404 (E)

Threaded spigot:

- DN 10-50: Stainless steel 1.4404 (E)

Ventilbyggelengde:

DN 10: Iht DIN EN 558 rad 27

DN 15-50: Iht DIN EN 558 rad 1

Valve face to face length:

DN 10: Acc. to DIN EN 558 row 27

DN 15-50: Acc. to DIN EN 558 row 1

Ventil overflate:

Rustfritt stål: Elektropolert matt

Våte deler = Ra 0,5

Satin polert (børstet) Ra 0,3

Valve finish:

Stainless steel: Electropolished matt

Wetted parts = Ra 0.5

Satin polished (brushed) Ra 0.3 on request.

Aluminium: Pulver lakkert 60-80µm RAL 9006

Aluminium: Powder coated 60-80µm RAL 9006

DN (mm)	ø Di (mm)	D1 (mm)	D2 (mm)	D3	G (inch)	H (mm)	L1 (mm)	L2 (mm)	Lx1 (mm)	Lx2 (mm)	S	² Vol. (l) (ca./approx.)	Vekt weight (kg) (EE)	Vekt weight (kg) (AE)	Vekt weight (kg) (PE)
10	10	46	35	Rd28x1/8"	1/8"	23	68	115	153	197	4x(M6x16)	0,03	0,5	-	0,3
15	16	56	47	Rd34x1/8"	1/8"	28	85	130	178	222	4x(M6x20)	0,05	0,9	-	0,5
20	20	62	49	Rd44x1/6"	1/8"	31	93	150	194	238	4x(M6x25)	0,07	1,1	0,8	-
25	26	72	57	Rd52x1/6"	1/8"	36	110	160	217	251	4x(M6x30)	0,09	1,6	1,1	-
32	32	80	66	Rd58x1/6"	1/4"	45	130	180	238	274	8x(M6x35)	0,13	2,1	1,5	-
40	38	90	77	Rd65x1/6"	1/4"	50	150	200	252	286	8x(M6x35)	0,22	2,8	1,9	-
50	50	110	88	Rd78x1/6"	1/4"	60	175	230	278	312	8x(M6x35)	0,36	4,2	2,9	-

¹ Festeskruer (Rustfritt 1.4401/AISI316) iht DIN 933 (EN24107) / mounting screws (stainless steel 1.4401 / AISI 316) according to DIN 933 (EN24107)

² Volum = Instrumentluftvolum ved lukket ventilslange / Volume = Control volume with closed sleeve